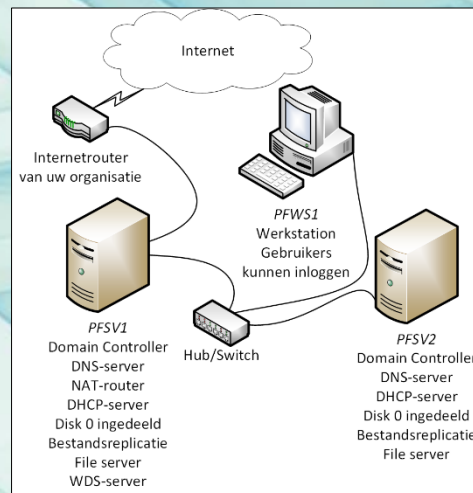
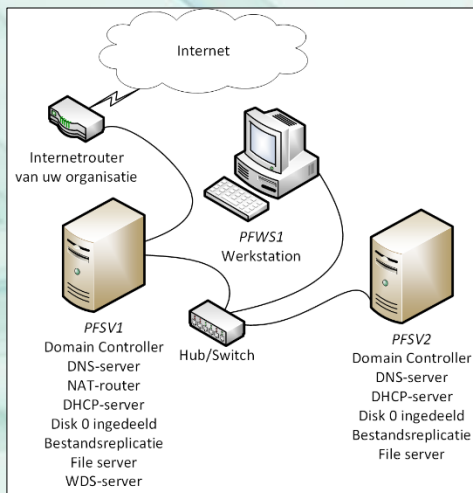


# Hoofdstuk 9

OU's en gebruikers

# In dit hoofdstuk

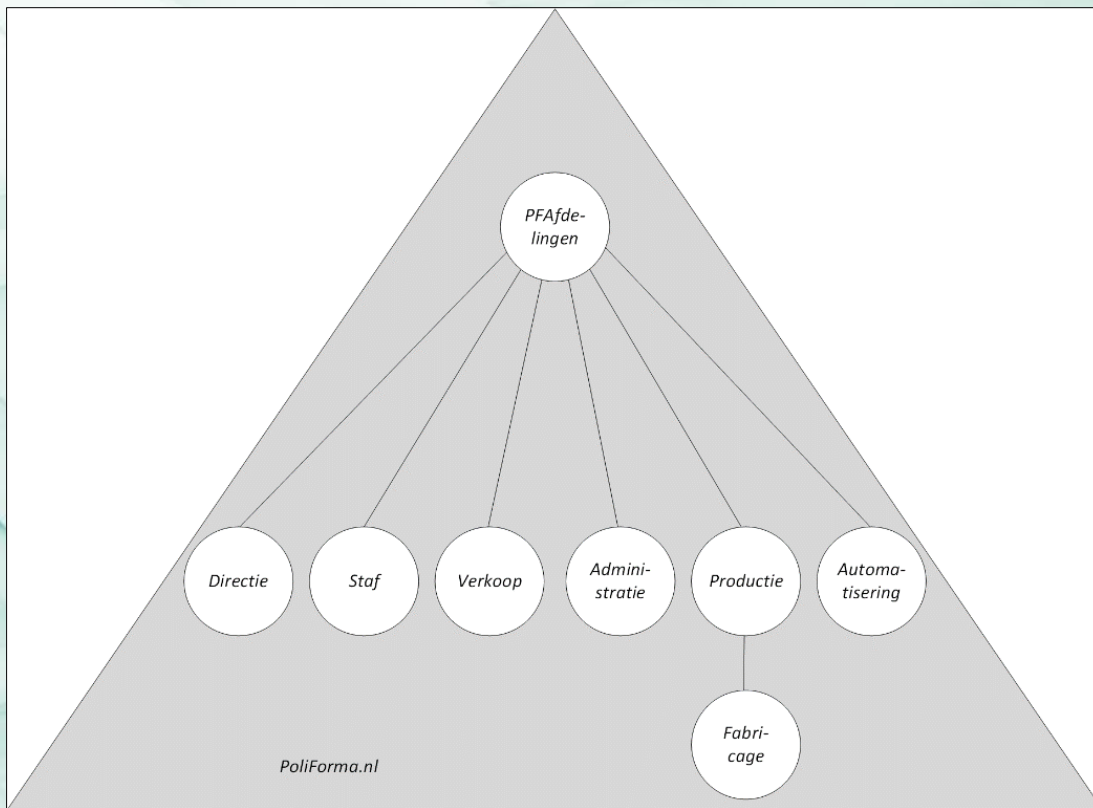
- OU's
- Gebruikers
- Kennis
- Vaardigheden



# Organizational Unit

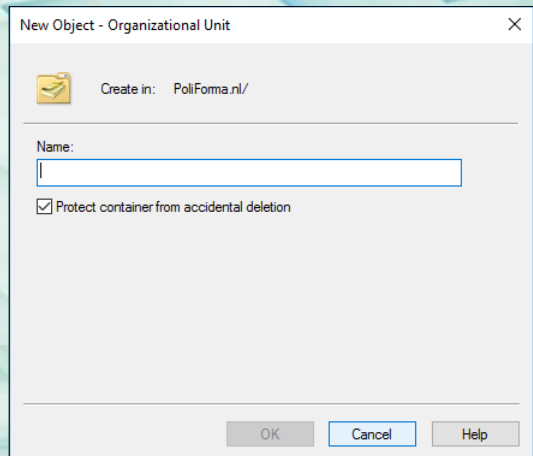
- Container in AD
- Daarin:
  - Computer accounts
  - Contacts
  - Groups
  - Users
  - Shared folders
  - Printers
  - Applications
  - Andere OU's (nesten)
- Toepassen om:
  - De organisatie in AD af te beelden
  - Group policies op toe te passen

# OU-structuur voor het domain

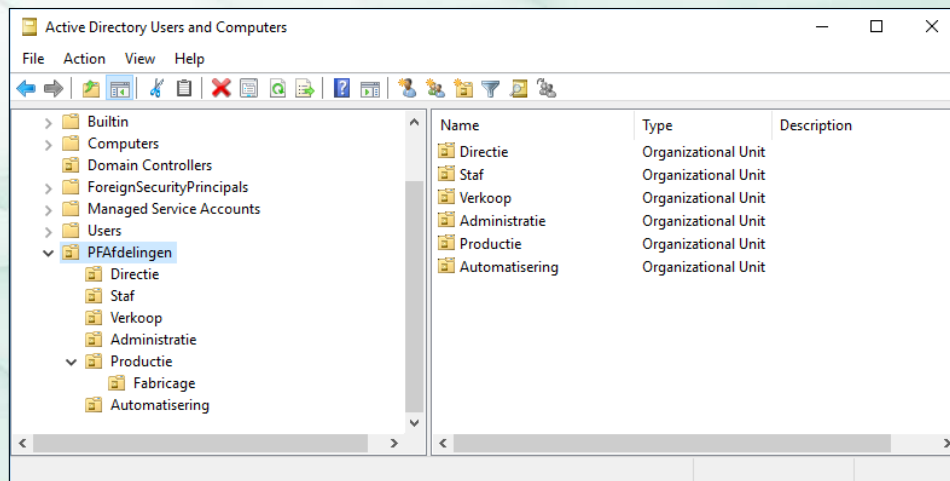


# OU aanmaken

- Op de juiste plek in AD
- Alleen een naam
- *Protect container from accidental deletion*

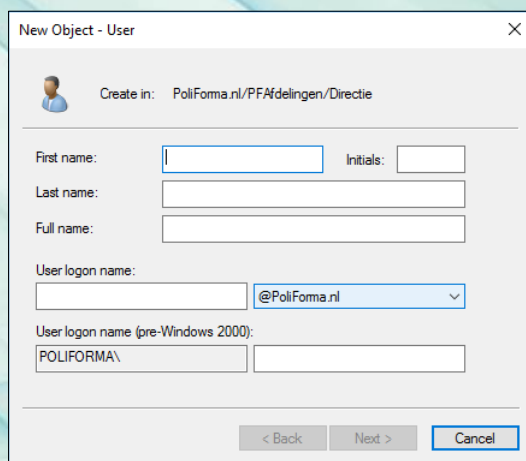


# PoliForma BV in het domain PoliForma.nl



# Een user account aanmaken (1)

- Voor- en achternaam
- *User logon name*
  - UPN
  - NetBIOS-naam



New Object - User

Create in: PoliForma.nl/PFAfdelingen/Directie

First name:  Initials:

Last name:

Full name:

User logon name:  @PoliForma.nl

User logon name (pre-Windows 2000): POLIFORMA\

< Back Next > Cancel

# Een user account aanmaken (2)

- Wachtwoord:
  - *User must change password at next logon*
  - *User cannot change password*
  - *Password never expires*
  - *Account is disabled*
  - Secure password
  - Hoofdlettergevoelig
  - Hoe eenvoudig te onthouden?

New Object - User

Create in: PoliFoma.nl/PFAfdelingen/Directie

Password:

Confirm password:

User must change password at next logon

User cannot change password

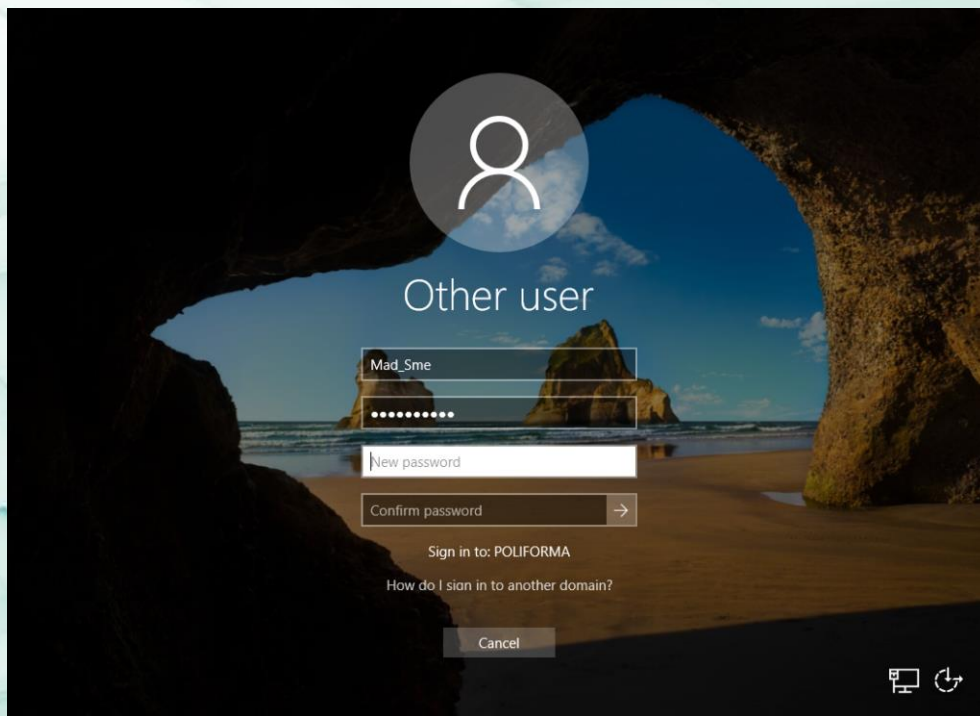
Password never expires

Account is disabled

< Back Next > Cancel

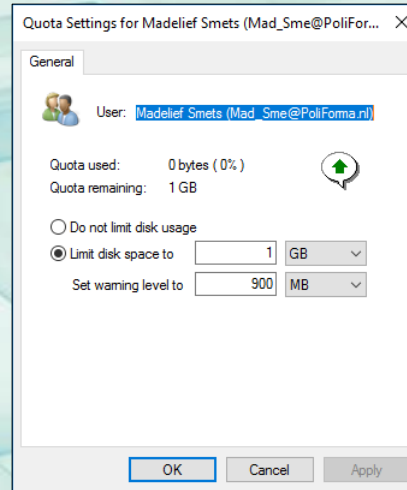
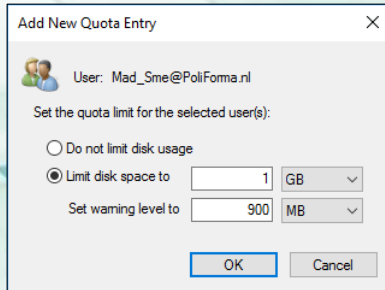


# Eerste keer inloggen; password wijzigen

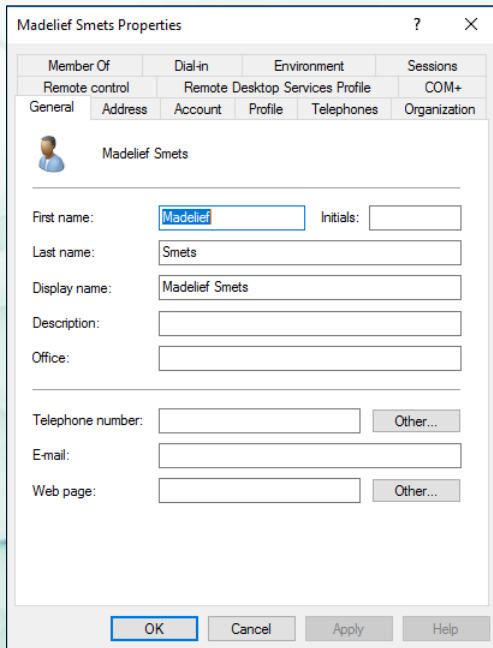


# Quotumingang voor de gebruiker toevoegen

- Afwijken van de standaard kan



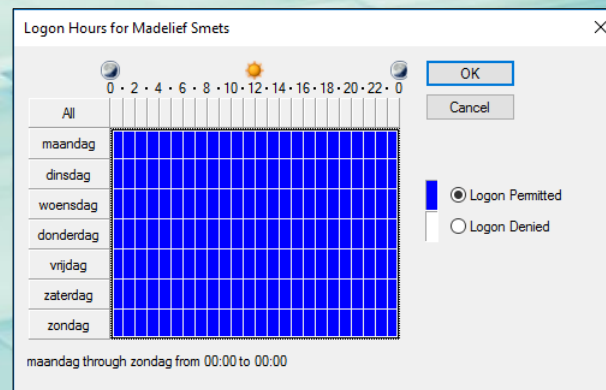
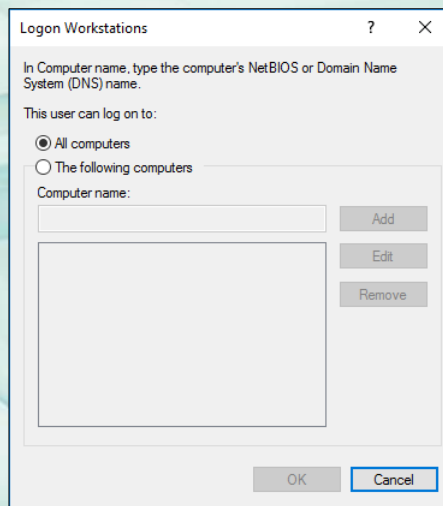
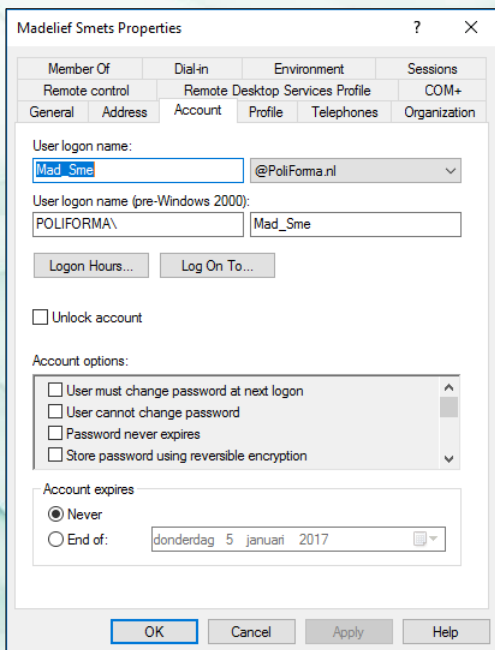
# De eigenschappen van een user account (1)



The screenshot shows the 'Madelief Smets Properties' dialog box with the 'General' tab selected. The dialog box contains the following fields and options:

- Member Of:** Remote control
- Dial-in:** Remote Desktop
- Environment:** Services Profile
- Sessions:** COM+
- General:** Selected tab
- Address:** Account
- Profile:** Telephones
- Organization:** Organization
- Name:** Madelief Smets
- First name:** Madelief
- Initials:** (empty)
- Last name:** Smets
- Display name:** Madelief Smets
- Description:** (empty)
- Office:** (empty)
- Telephone number:** (empty) Other...
- E-mail:** (empty)
- Web page:** (empty) Other...
- Buttons:** OK, Cancel, Apply, Help

# De eigenschappen van een user account (2)



# De eigenschappen van een user account (3)

- *User Profile*
  - Local profile
  - Roaming profile
  - UNC-pad
  - %Username%
- *Home folder*
  - Driveletter voor de mapping
  - UNC-pad
  - %Username%

Madelief Smets Properties

Member Of	Dial-in	Environment	Sessions
Remote control	Remote Desktop Services Profile	COM+	

General Address Account Profile Telephones Organization

User profile

Profile path:

Logon script:

Home folder

Local path:

Connect:  To:

OK Cancel Apply Help

# De eigenschappen van een user account (4)

Madelief Smets Properties

Member Of	Dial-in	Environment	Sessions
Remote control	Remote Desktop Services Profile	COM+	
General	Address	Account	Profile
Telephones	Organization		

Job Title:

Department:

Company:

Manager

Name:

Direct reports:

Madelief Smets Properties

Remote control	Remote Desktop Services Profile	COM+
General	Address	Account
Profile	Telephones	Organization
Member Of	Dial-in	Environment
Sessions		

Member of:

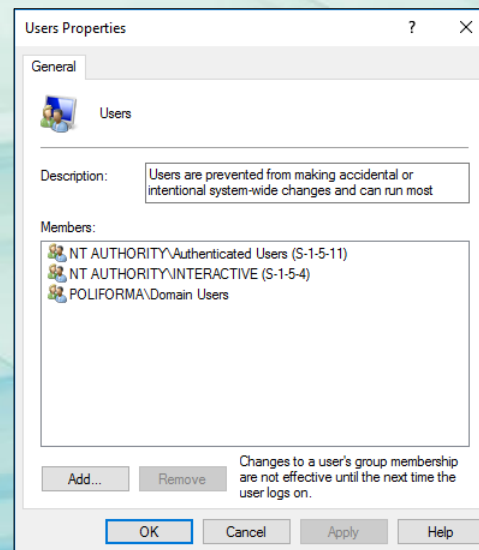
Name	Active Directory Domain Services Folder
Domain Users	PoliFoma.nl/Users

Primary group: Domain Users

There is no need to change Primary group unless you have Macintosh clients or POSIX-compliant applications.

# Gebruikers kunnen inloggen op werkstations

- Domain group *Domain Users* is lid van de machine local group *Users*



# De eigenschappen van een OU

Directie Properties

General Managed By COM+

Directie

Description:

Street:

City:

State/province:

Zip/Postal Code:

Country/region:

OK Cancel Apply

Directie Properties

General Managed By COM+

Name:

Change... Properties Clear

Office:

Street:

City:

State/province:

Country/region:

Telephone number:

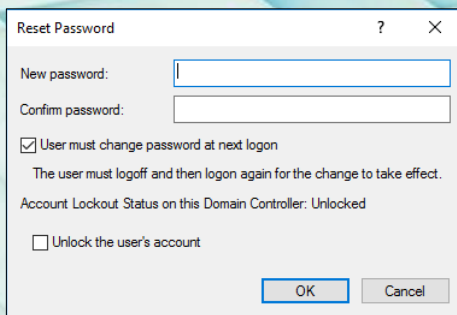
Fax number:

OK Cancel Apply



# De domain Administrator en user passwords

- Wachtwoorden nooit te lezen
- Wachtwoorden wel opnieuw in te stellen
- Gebruikers kunnen hun eigen password wijzigen



Reset Password

New password:

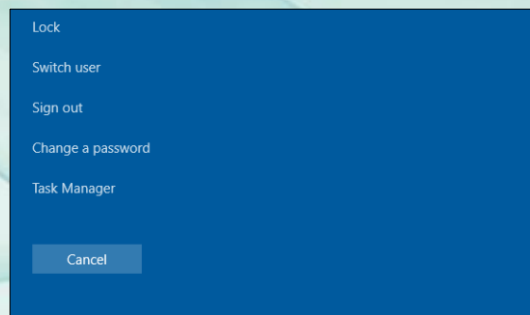
Confirm password:

User must change password at next logon  
The user must logoff and then logon again for the change to take effect.

Account Lockout Status on this Domain Controller: Unlocked

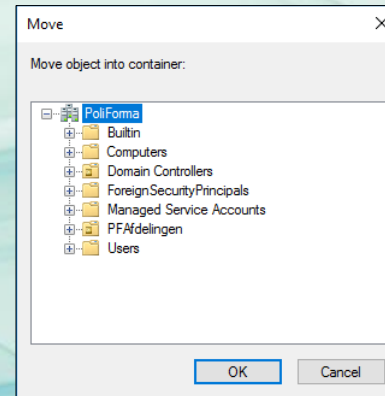
Unlock the user's account

OK Cancel

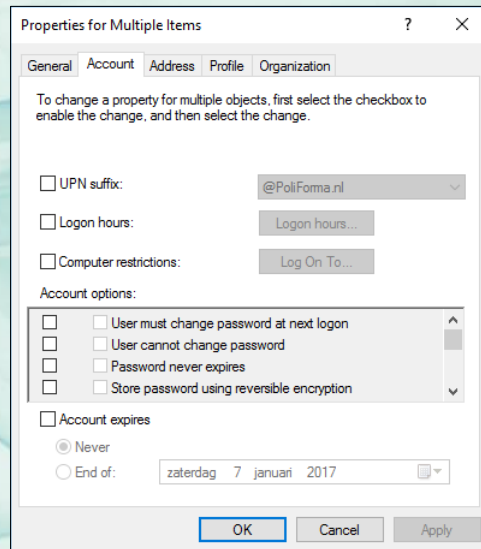
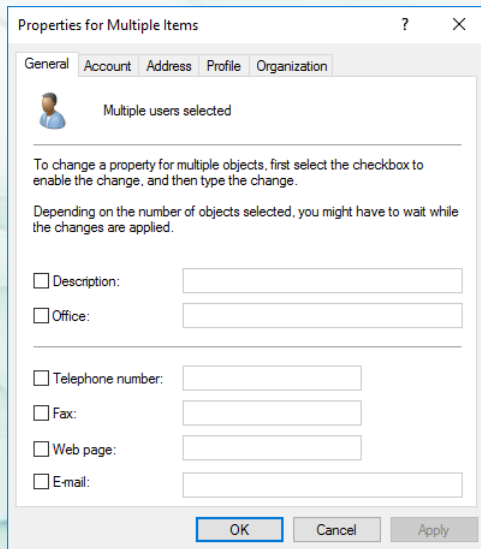


# User accounts verplaatsen

- User account erft group policies
- Door te slepen
- Via het venster *Move*

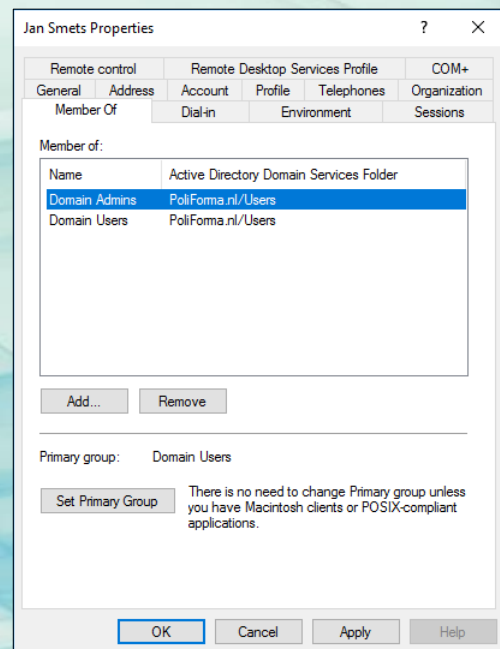


# De eigenschappen van verschillende gebruikers



# Het user account van de beheerder

- Lokaal profiel i.p.v. zwervend profiel
- Lid van de domain group *Domain Admins*

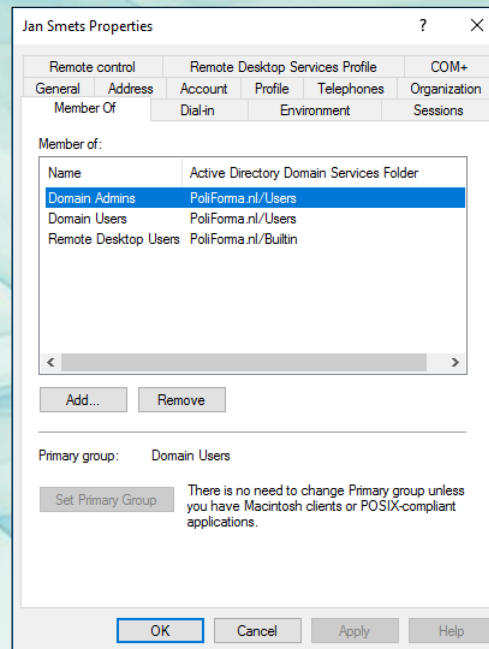
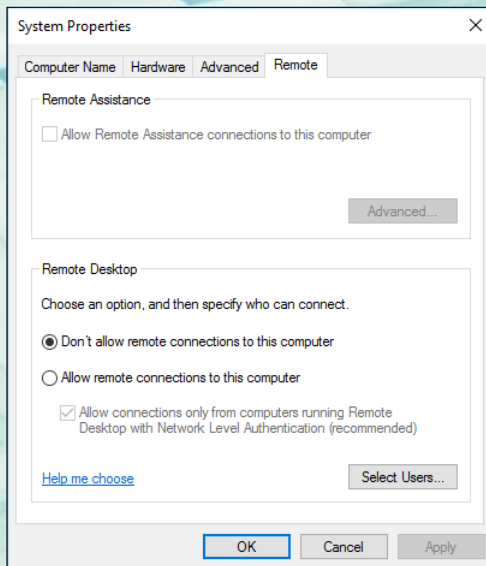


# Remote desktop

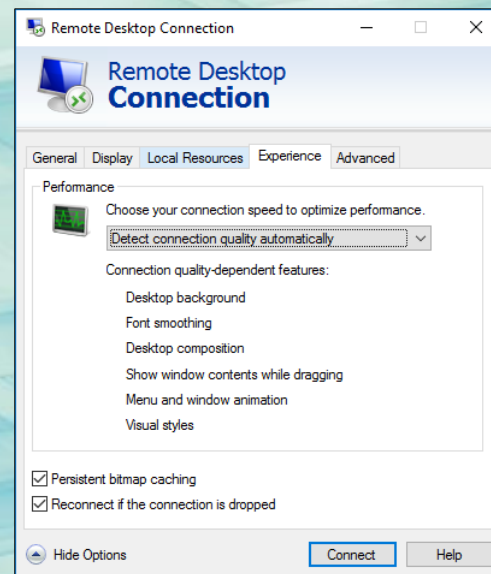
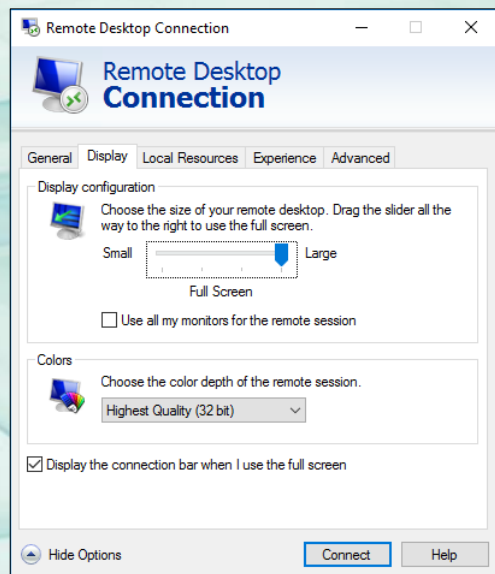
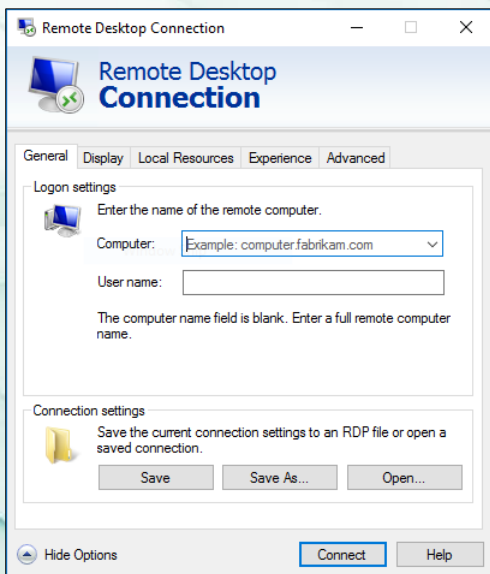
- Via een workstation een DC bedienen
- Remote Desktop Services
- Remote sessie
- RDP-protocol

# Op de DC een remote-verbinding toestaan

- Type remote-verbinding
- Wie

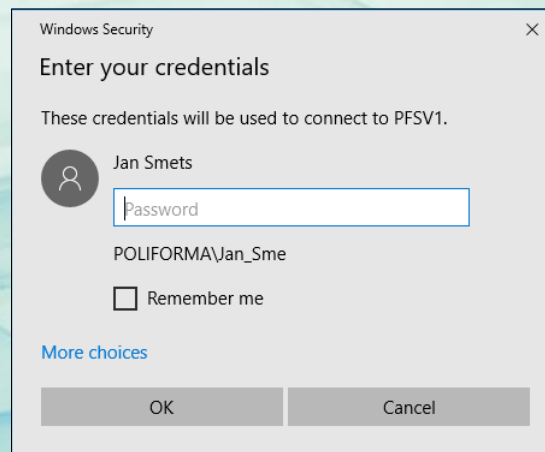


# Op PFWS1 de verbinding configureren



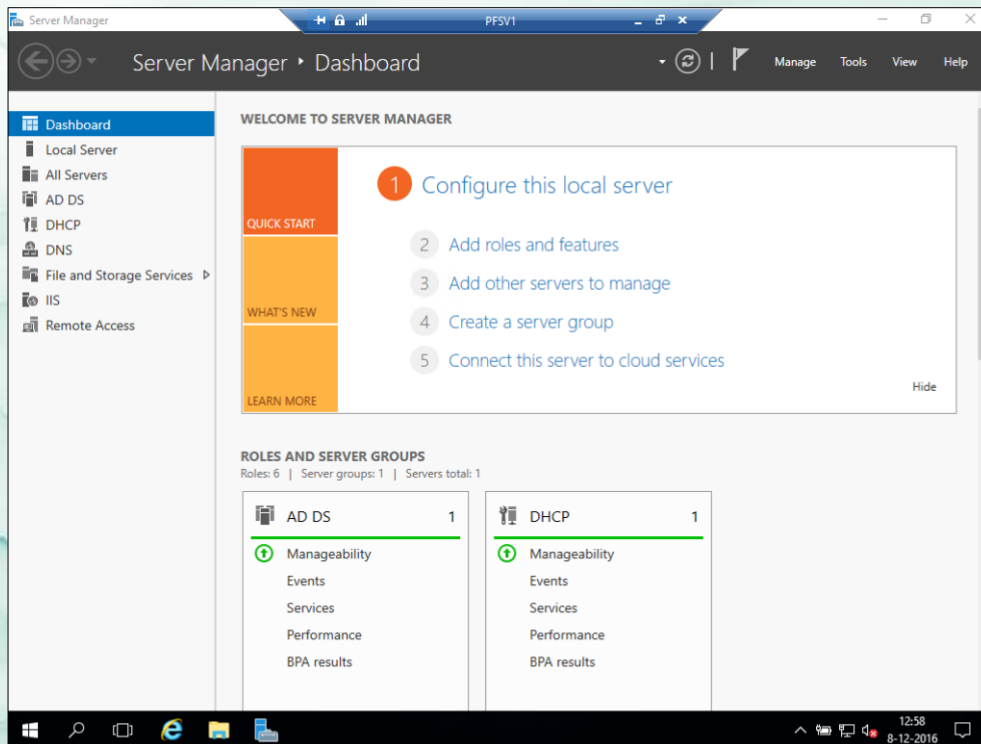
# De remote-verbinding gebruiken

- Inloggen blijft nodig





# De remote-verbinding in gebruik



# RunAs

